

PRIME BREW

NS01PB

Portable
coffee
machine

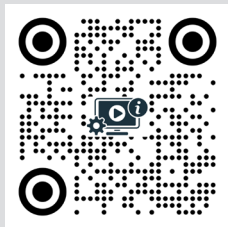
Please read all instructions carefully
and retain for future use.

USER MANUAL



nomious®

Scan the QR code for a
video instruction of how to
brew coffee with Nomious
PRIMEBREW



Scan the QR to download
or read the user manual

Introducing the Nomious Portable Coffee Machine.
Your perfect companion for a fresh brew, anytime,
anywhere. This innovative device is designed to deliver
a hot cup of coffee with just a touch of a button.

With Nomious, you can enjoy a hot cup of coffee by
simply adding cold water. It works with both capsules
and coffee powder, giving you the flexibility to choose
your preferred type of coffee.

nomious®

1	General safety information	3
2	Battery warning	7
3	Product structure	8
4	Product parameter	10
5	Charging	11
6	How to brew with PrimeBrew	12
7	Cleaning & Descaling	16
8	Storage	16
9	Declarations/Notices	17

- Always keep the product out of reach from Children! The packaging materials and accessories can contain small parts that may cause choking if ingested.
- Appliances can be used by persons with reduced physical, sensory or mental capabilities or lack of experience and knowledge if they have been given supervision or instruction concerning use of the appliance in a safe way and they understand the hazards involved.
- This appliance can be used by children aged from 8 years and above if they have been given supervision or instruction concerning use of the appliance in safe way and if they understand the hazards involved. Cleaning and user maintenance shall not be made by children unless they are older than 8 and supervised. Keep the appliance out of reach of children aged less than 8 years.
- Children shall not play with the appliance.
- Cleaning and user maintenance shall not be made by children without supervision.
- Do not hand over the product to another user who did not read the manual before usage.
- Be aware that surfaces can become hot during operation. Avoid touching hot surfaces.
- Use the coffee maker according to this instruction, any misuse may cause electric shock or other hazards.

- Be aware that hot coffee will flow out of the outlet. Avoid placing your hand or other body parts under the outlet during operation.
- Use the right cup size that fits properly under the coffee outlet to prevent spills and burns.
- Allow the coffee to cool down before drinking to avoid burns. Take small sips to test the temperature of the coffee before drinking normally.
- Never turn on the product without water in the tank.
- Place the product on a stable, level surface to prevent it from tipping over.
- Do not place the product under direct sunlight or near heat sources.
- Never leave the product unattended while it's operating.
- Ensure no foreign objects are inside the water tank and coffee container before operation.
- Do not hold, move or shake during operation. Do not open the water tank lid while operation and make sure it is cooled down when you open the water tank lid or the locking chamber.
- Use clean, filtered water for brewing to prevent mineral build-up.
- Do not fill the water tank above the maximum level indicated to prevent overflow.
- Use the right size of coffee ground as recommended in the manual to prevent clogging.
- Ensure the product is well ventilated during operation and not covered.

- Keep the product away from flammable materials during operation.
- Always use original parts and accessories intended for use with the product.
- Never try to dismantle the product or accessories yourself, and do not replace components (unless applicable) or push objects into the product. Only authorized dealers or service centers may open the products.
- Never try to put unnecessary tension or strain on the USB cable, including rolling the cable around human bodies, pets or around the body of the product, as this could lead to damages of the product.
- Please be cautious to keep all products, cables and other accessories in a safe operating environment and avoid exposing your product to rain, moisture or other liquids (if not designed for this use).
- If the product overheats, has been dropped and damaged, has damaged cables, or has been dropped in a liquid, then discontinue its use and contact Nomious.
- Observe all signs and instructions that require an electrical device to be switched off in designated areas such as hospitals or aircrafts.
- Use caution when you are engaging in activities that requires your full attention e.g. traffic.

- Use only a suitable USB cable which is in good condition, and charge/power the product according to the instructions.
- Only use the provided USB cable for charging. Using a different cable may result in damage or fire.
- Do not leave the product plugged in and charging for an extended period of time beyond the required charging time. Avoid charging it in high temperature environments.
- For maintenance, unplug the charger/power, make sure it is turned off and cool down product before cleaning. Do not use abrasive cleaners which could damage the finish. Clean the product by wiping with dry or slightly damp cloth. Do not add the product or other accessories into a dishwashing machine. The USB cable and port may only be dry-dusted.
- Dispose of the product according to local standards and regulations.
- This appliance is intended to be used in household and similar applications such as:
 - staff kitchen areas in shops, offices and other working environments;
 - farm houses;
 - by clients in hotels, motels and other residential type environments;
 - bed and breakfast type environments.
- The appliance must not be immersed.

- Be careful, the heating element surface is subject to residual heat after use.
- Make sure all parts are clean before starting the brewing process (read more about cleaning). Cleaning and user maintenance shall not be made by children without supervision.
- The coffee maker shall not be placed in a cabinet when in use.

Remember, safety first! Enjoy your coffee.

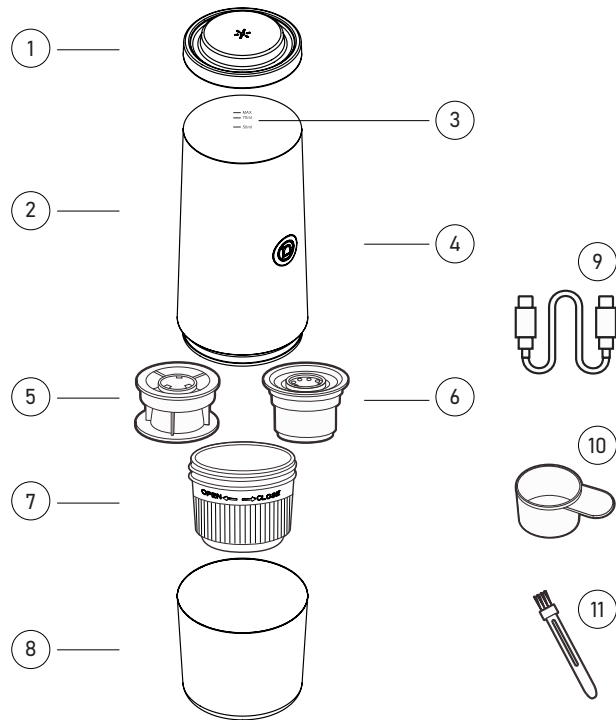
BATTERY WARNING!

Please observe the following.

- “Caution” – The battery used in this product may present risk of fire or chemical burn if mistreated. Batteries may explode if damaged.
- Dispose the product with batteries according to local regulations. Please recycle when possible. Do not dispose as household waste or in a fire as the batteries may explode.
- Never try to dismantle the product to replace the batteries.

PRODUCT STRUCTURE

- 1 Lid
- 2 Main body
- 3 Water tank
- 4 Button & Light indicator
- 5 Capsule basket
- 6 Coffee powder basket
- 7 Locking chamber
- 8 Cup
- 9 Type-C USB Cable
- 10 Spoon
- 11 Brush

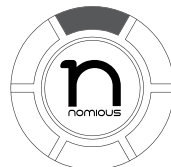


PRODUCT PARAMETER

PORTABLE COFFEE MACHINE					
Model Name:	PrimeBrew				
Version:	NS01PB				
Coffee Input:	Powder or Capsules (compatible with Nespresso®** or similar types of capsules)				
Brewing method:	Hot or Cold brewing				
Water Tank Material:	Food Grade Stainless Steel				
Water Tank Capacity:	80ml	Extraction Pressure:	20bar		
Power:	90W	Input:	5V \equiv 3A	Battery:	7500mAh
Water Heating:	Build-in water heating technology				
Extract temperature:	92°C / 197.6°F (Approx 3 min to heat up 50ml water)				
Product Weight:	650g (without coffee baskets)				

CHARGING

- Use a 5V/3A wall charger for the fastest charging result.
- A 5V/2A wall charger is also compatible.
- Use the type-C cable provided with the machine for charging.
- When the machine is fully charged all LED lights turns on and turns off after 1 minute.



0% Battery



20% Battery



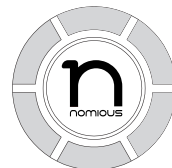
40% Battery



60% Battery



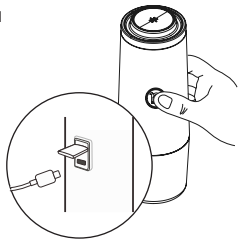
80% Battery



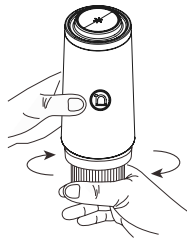
100% Battery

HOW TO BREW COFFEE WITH PRIMEBREW

1. Check the battery level before you start the process by pressing the button once. If the battery level is low, please charge the machine first via the USB cable.

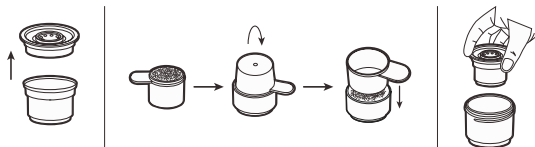


2. Take the cup off and unscrew the chamber. If you already used the machine to brew coffee, make sure you wait at least 5 minutes before starting to unscrew the chamber.

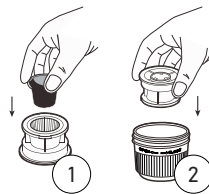


3. Add coffee powder to the powder basket or a capsule into the capsule basket.

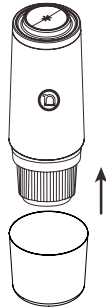
- a. **Coffee powder:** take the lid of the powder basket, fill 6g (recommended) coffee powder in the spoon and place the basket on top of it and turn around to transfer the powder from the spoon to the basket. Use the bottom of the spoon to press gently the powder into a more solid structure and close the powder basket again with its lid. Place it in the chamber and screw the chamber tight to the machine.



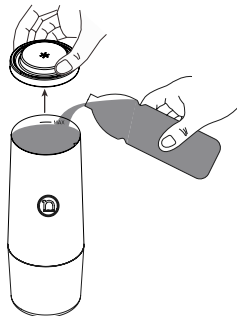
- b. **Capsule:** Make sure first that the coffee capsule is a ****Nespresso®** or similar shaped capsule. Add it to the capsule basket and press it gently down. Place the capsule basket into the chamber and screw it tight to the machine (Important that it gets very tight to avoid leakage).



4. Put the cup back on.



5. Open the water tank lid by screwing it off and add the water volume needed. Make sure you do not exceed the maximum marking (80ml). Put back the lid and you are ready to brew.



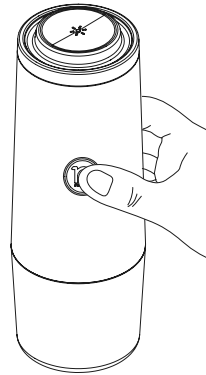
6. Different brewing methods:

a. **Cold brew:** A long press on the button to extract the cold coffee.

b. **Add hot water:** A long press on the button to extract the hot coffee.

c. **Add water and heat it:** If the water is not hot enough, double press the button to reach up to 92°C/197.6 °F (It takes around 3 minutes to heat 50ml water to 92°C/197.6 °F). When the LED light stop rotating. A long press on the button to extract the hot coffee.

7. To stop the extraction press the button once.



CLEANING & DESCALING

1. After each coffee brew, clean the basket, chamber and cup by using clean water.
2. There could be water left in the water tank, clear and dry it.
3. For the main body use a wipe to clean it, do not put it in a dish washer or direct into water.
4. Do not use detergent for cleaning the machine and its parts.

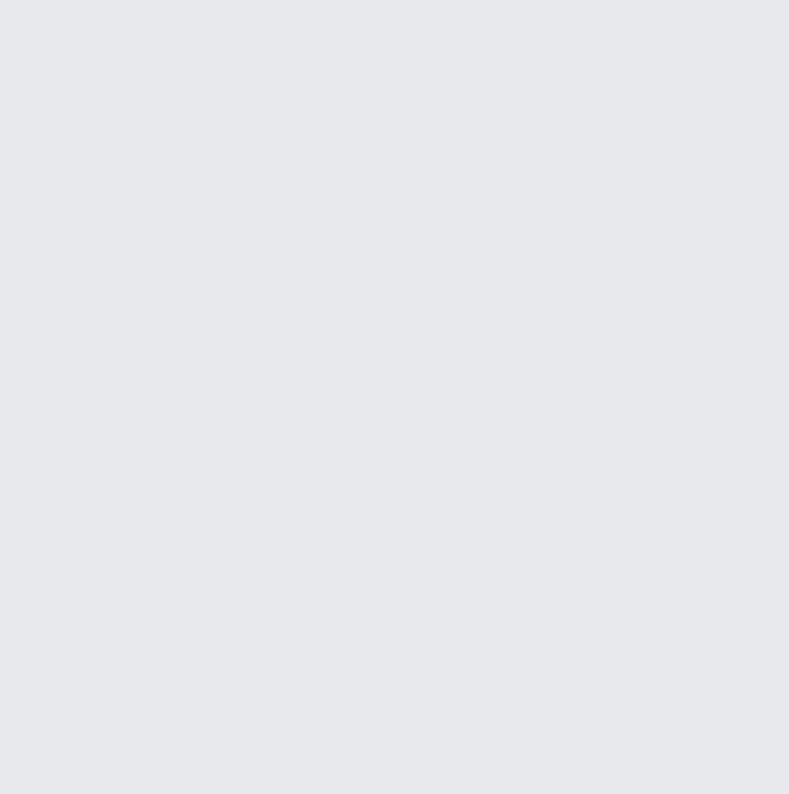
STORAGE

1. Do not expose the machine to fire, direct sunlight, direct water or high temperatures.
2. Store the machine in a cool and dry place.

DECLARATIONS/NOTICES

This mark on a product and/or accompanying documents indicates that when it is to be disposed of it must be treated as Waste Electrical & Electronic Equipment (WEEE). Any WEEE marked waste products must not be mixed with general household waste, but kept separate for the treatment, recovery and recycling of the materials used. For proper treatment, recovery and recycling; please take all WEEE marked waste to your Local Authority Civic waste site, where it will be accepted free of charge. If all consumers dispose of Waste Electrical & Electronic Equipment correctly, they will be saving valuable resources and preventing potential negative effects upon human health and the environment from hazardous materials that the waste may contain.







INNOVATION IN MOTION

www.nomious.com